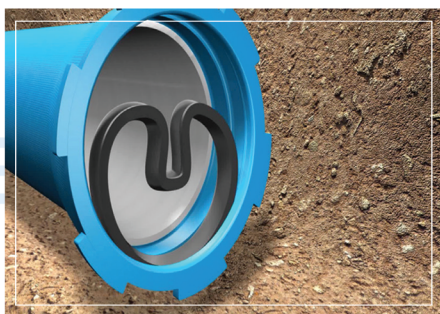
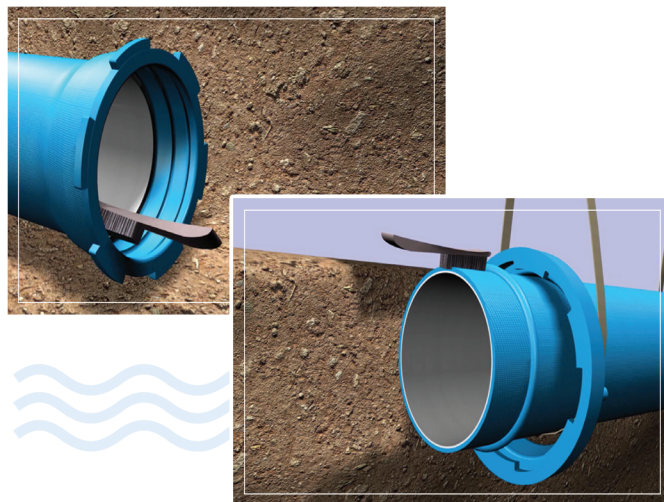


R.J.Pipe Assembly instructions

First step

Primarily unfasten the holding wire which fix gland to the spigot as well as the safe transportation of pipe and accessories. Afterwards, clean all the contaminations and impurities from the end of spigot, socket and gland internal body using a proper wire brush.

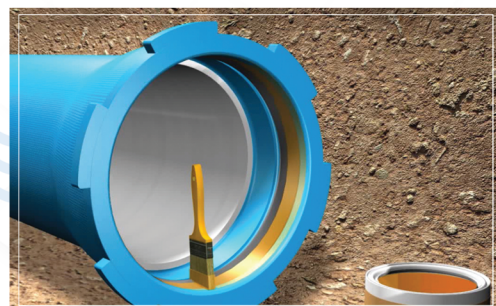
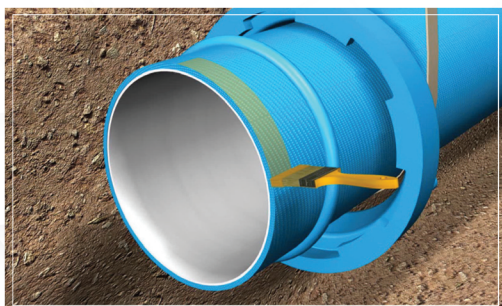


Second Step

Before sealing gasket insertion, please make sure that socket of pipe is clean. Then apply a proper soap-based lubricant inside socket. Finally start assemblage operation by fixing the proper gasket into the socket.

Third Step

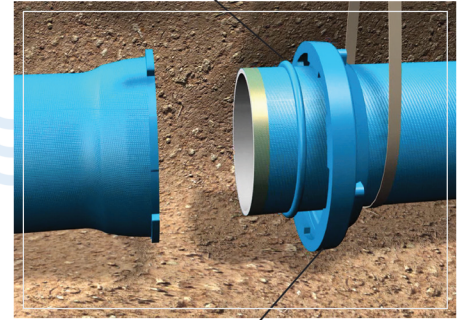
Apply the proper lubricant on spigot end and inside of socket again.



Fourth Step

Place the end of pipe spigot into the pipe socket. Make certain that the locking ring has been properly welded around spigot. When two pipes are along each other, Apply uniform pressure to assemble two pipes preferably with relevant tools such as mechanical winches or crowbar.

Locking ring



Gland



Fifth Step

Move the gland toward pipe socket so that its lugs are placed among the lugs existing on the pipe socket. Then move it toward pipe socket and rotate consequently so that all its lugs are placed behind pipe's lugs.

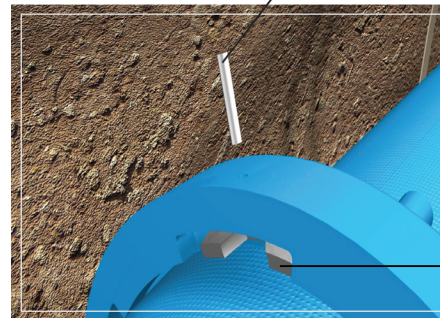
Sixth Step

Three or four drilled holes with certain distances of each other are placed on the gland depending on the pipe's size. After putting gland's lock in its proper place, please insert a corrosion-resistant roll pin into one the drilled holes.

It's better to put the roll pin higher than the gland's external body so that the disassembling operations would be easily performed.

In order to prevent from re-rotating the gland around socket, the gland's lock should be selected in proportion to that pipe size.

Roll pin



Gland's lock

